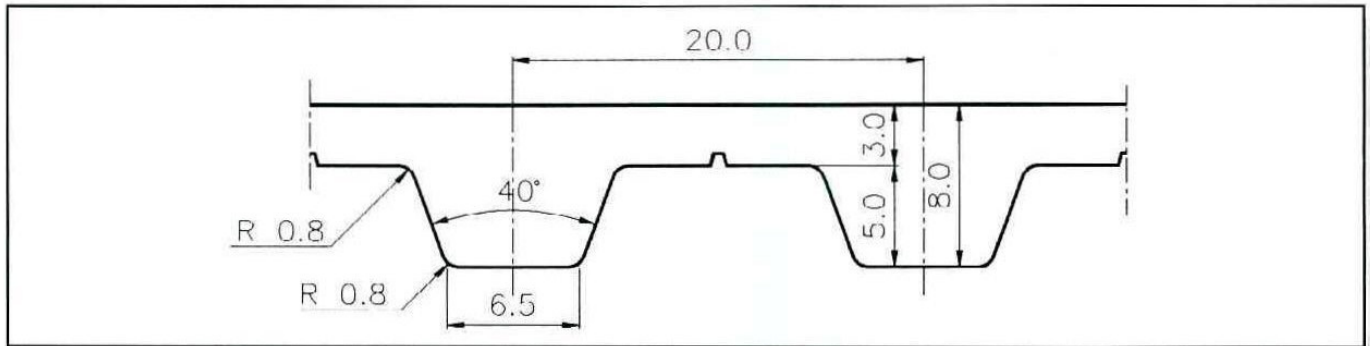




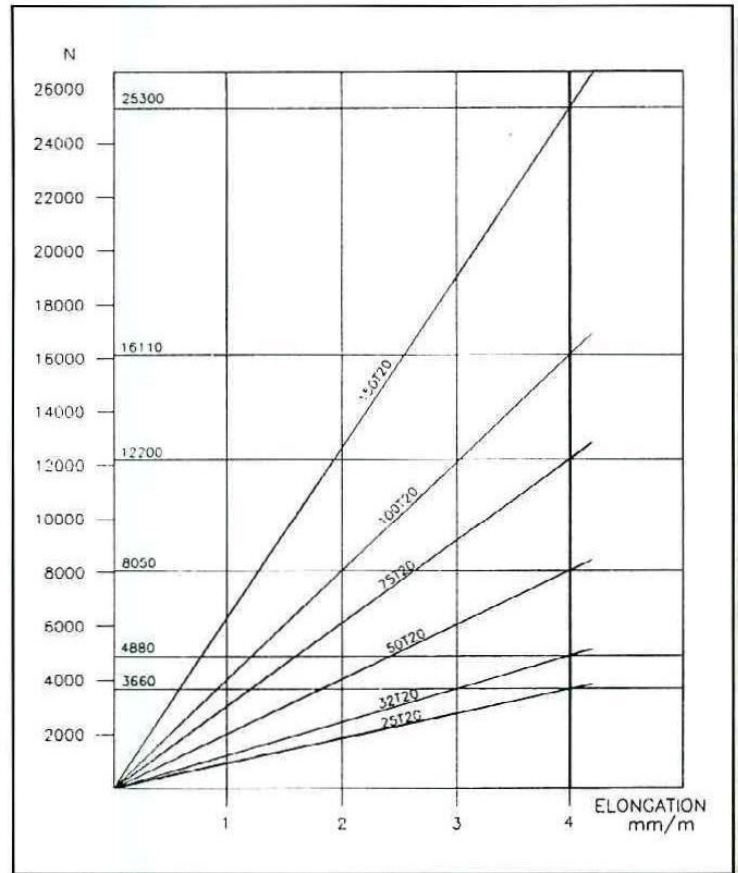
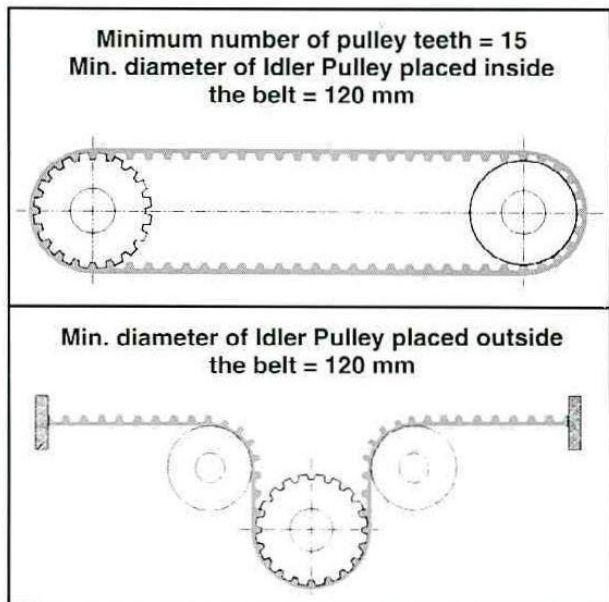
T20

BELT DATA



WIDTH [mm]	MAX TRACTION LOAD [N]	MAX TRACTION LOAD JOINED	BREAKING STRENGTH [N]
25	3660	1830	12460
32	4880	2440	16620
50	8050	4025	27430
75	12200	6100	41560
100	16110	8050	54860
150	25300	12650	86400

LL	- OPEN END BELT -
J	- JOINED BELT -



BELT CODE		
Width	Type	Length
50	T20	100 m-LL
50	T20	9600 mm-J

ROLLS STANDARD LENGTH				
25	32	50	75	100
100 m				

MINIMUM LENGTH JOINED BELT
For all widths
1000 mm