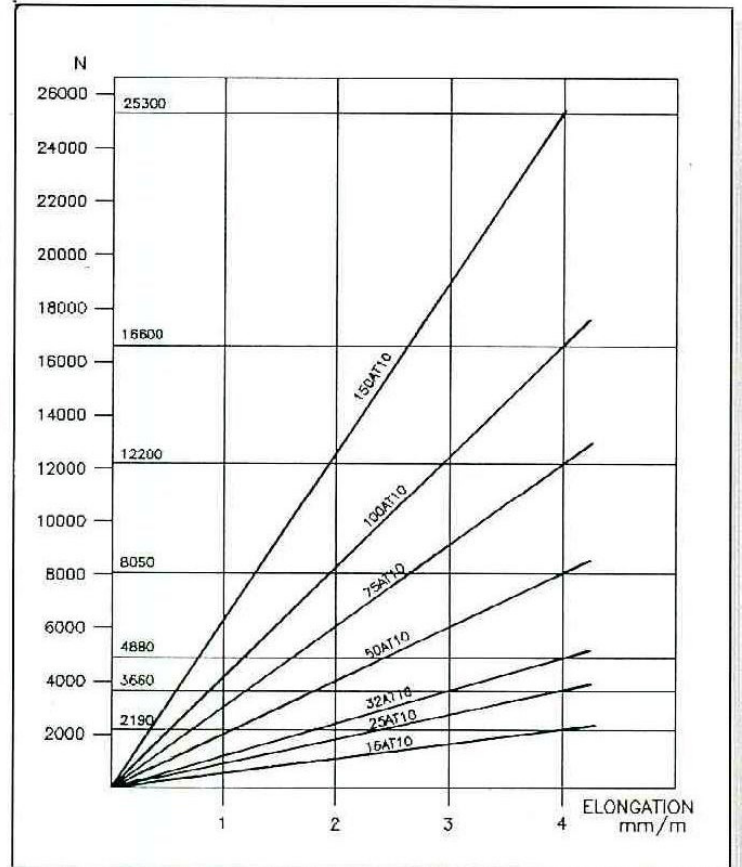
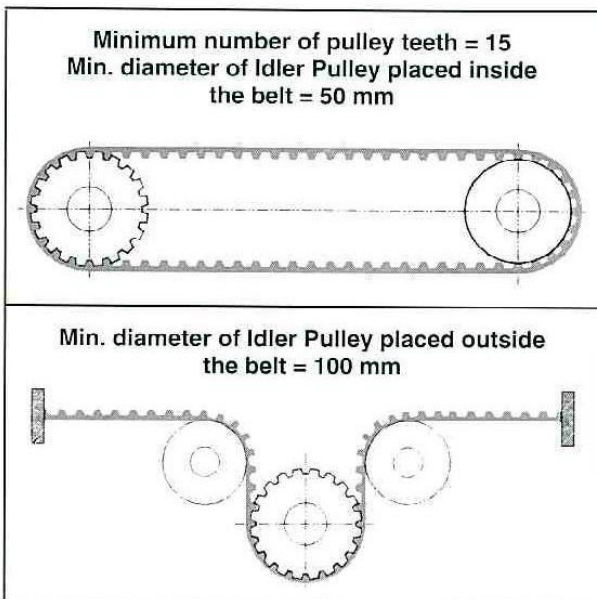


WIDTH [mm]	MAX TRACTION LOAD [N]	MAX TRACTION LOAD JOINED [N]	BREAKING STRENGTH [N]
16	2190	/	7480
25	3660	1830	12450
32	4880	2440	16600
50	8050	4025	27400
75	12200	6100	41500
100	16600	8300	56500
150	25300	12600	86400

LL	- OPEN END BELT -
J	- JOINED BELT -



BELT CODE		
Width	Type	Length
50	AT10	100 m-LL
50	AT10	4800 mm-J

ROLLS STANDARD LENGTH					
25	32	50	75	100	150
100 m					

MINIMUM LENGTH JOINED BELT
For all widths
900 mm